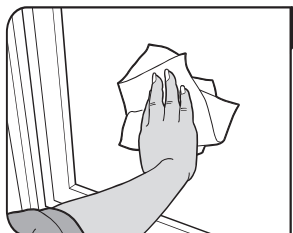


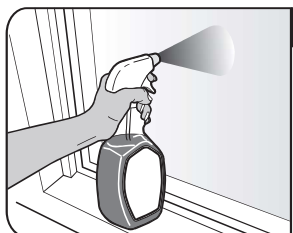
## Application instructions – Self-adhesive window film



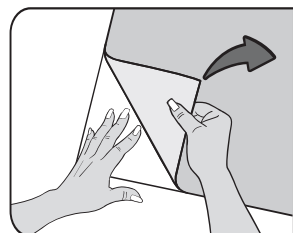
**1** In order to apply the film properly, please clean glass, thoroughly and apply only to a flat surface.



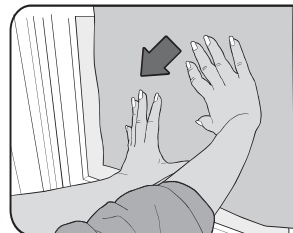
**2** Measure to the size required using the grid on the backing paper – please allow 2 mm distance to the window frame – cut film carefully.



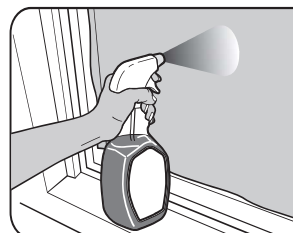
**3** Spray glass with enough water.



**4** Remove backing paper completely and position film on the glass.



**4.1**



**5** Spray film surface with water. Using a squeegee, remove moisture starting from the centre out to the edges.



**5.1**