

Processing instructions – Wall Tiles (30,5 cm × 30,5 cm)

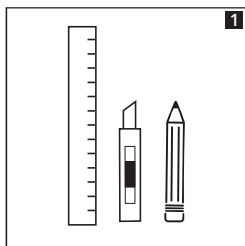
Preparation

Measure your wall to determine how much material is needed. Add on 10 % for excess.
For each design, the batch numbers on the back of the carton should be compared when purchasing.

Acclimatization: store for 24 hours in the room in which the Self-adhesive Wall Tiles are being installed

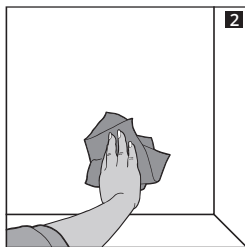
Temperature: room temperature from 20–22 °C

Tools required



Utility knife, ruler, pencil, measuring tape;
optional: smoothing blade, paint roller

Surface preparation



The surface must be clean, even, free of dust, oil, grease, holes and tears, and permanently dry. Any unevenness must be evened out using a suitable filler.

Smooth surfaces such as wall tiles are suitable for application.

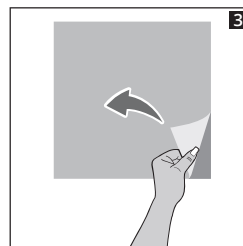
Do not apply: outdoors, behind ovens, radiators, gas stoves with open flames or in rooms with constant sunlight (e. g. conservatories).

Cleaning and care

Wait five days before cleaning the Self-adhesive Wall Tiles for the first time.
Clean the wall tiles with a gentle, standard liquid cleaner or soapy water and rinse thoroughly with clean water.

Caution: Avoid acetone, benzine and abrasive cleaning agents and sponges.

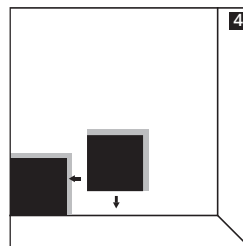
Application



Peel off the backing paper: There is a self-adhesive film on the back of the wall tiles that protrudes 2.5 cm at the top and right.

IMPORTANT: Only peel off the white backing paper and make sure that the transparent film remains attached to two edges of the tile. Apply the tiles with the transparent film facing the wall to improve adhesion and ensure the waterproof properties of the tiles.

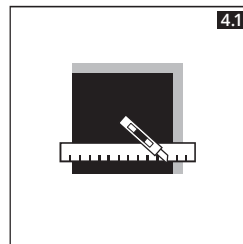
Aids: Apply one adhesive strip on the front and one on the back of the protruding film edges and pull the adhesive strips apart.



Position the first tile in the lower left-hand corner and press it onto the wall, applying even pressure over the entire surface.

Tools: Smoothing blade or clean paint roller

Apply the next tile edge to edge on top of the excess film of the previous tile to ensure water tightness of the joints. If possible, the protruding film edges should not end at the tile joints.
If necessary, cut the wall tiles to size by using a ruler and running a utility knife along them two or three times.



Edge finish: For a clean edge finish, cut off the protruding film from the top row of tiles.