

HOW TO APPLY SELF-ADHESIVE WALL TILES

IMPORTANT

Do not remove the clear membrane from the back of the tile as this forms a waterproof barrier. Only the white backing paper should be removed to reveal the sticky surface.

TOOLS FOR THE JOB:

Tape measure
Pencil
Cloth
Utility knife

Step 1



Clean the surface

Step 2



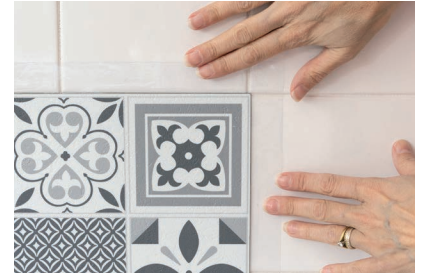
Measure.

Step 3



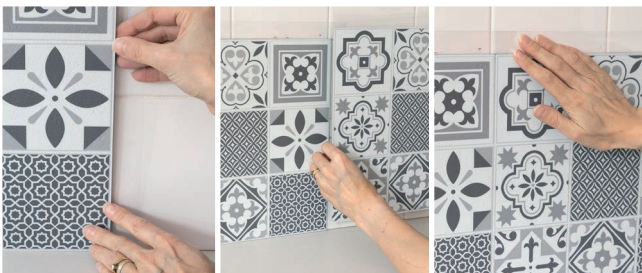
Peel away white backing paper (leaving the clear membrane in situ).

Step 4



Apply to the wall.

Step 5



Apply the next tile, overlapping the clear membrane to form a waterproof barrier between the tiles.

Step 6



If you need to cut the tile, just score and snap.